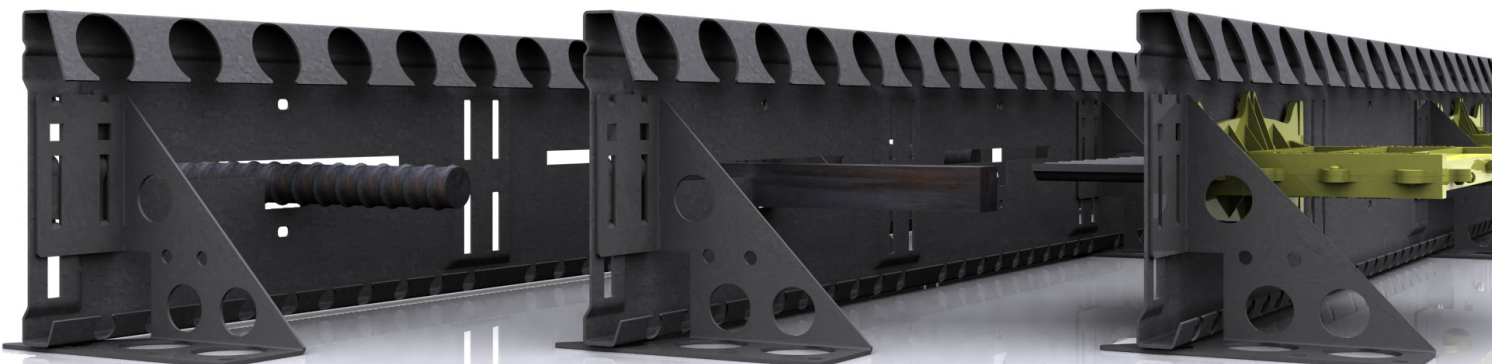


## Metaform Screed Rail

**M**etaform, a multipurpose screed rail designed for use in the construction of concrete slabs from 135mm up to 225mm thickness. Metaforms unique registered and patent protected design anchors itself into the top and bottom of the concrete slab, providing complete wrap around steel armoured protection of the slab edge, resisting spalling and damage to these vulnerable areas. Metaform's strong galvanized high tensile steel construction

makes it an excellent leave in place screed rail and perimeter form for concrete slabs, Ideally suited for heavier usage floors where joints and slab perimeters may be exposed to harsher treatment. Metaform is manufactured to the highest straightness tolerances, better than + or – 1mm in 3 metres, and is recommended for use on superflat floors, it will also accept all types of dowels and tie bars.

- **Innovative, unique design.**
- **Use as a leave in place screed rail.**
- **Strong lightweight construction.**
- **Precision engineering manufacture.**
- **Galvanised weather resistant coating – suitable for external use.**
- **Constructs floors to “Superflat” category.**
- **Provides steel armouring to joint arris.**
- **Accepts standard dowels and re-bar @ 300mm ctrs.**
- **Assists in resisting dowel burst out.**
- **Suitable for stop ends and perimeter forms.**
- **Crack inducement to full slab depth.**
- **Adjustable height and alignment.**
- **Range of easy and unique fixing methods.**
- **Quick, simple installation.**
- **Suitable for concrete slabs from 135mm up to 225mm deep.**
- **135mm, 160mm, 185mm sizes available immediately from stock, other sizes by special order.**



<b>Rail</b>	<b>Screed or Slab Depths</b>	<b>Weight per meter (kg)</b>
135	135mm - 175mm	1.75kg
160	160mm - 200mm	2.00kg
185	185mm - 225mm	2.25kg

Euro Accessories Ltd

Tel: 0845 052 4050 Fax: 0845 052 6575 Email: sales@euroacc.co.uk

Web: www.euroacc.co.uk